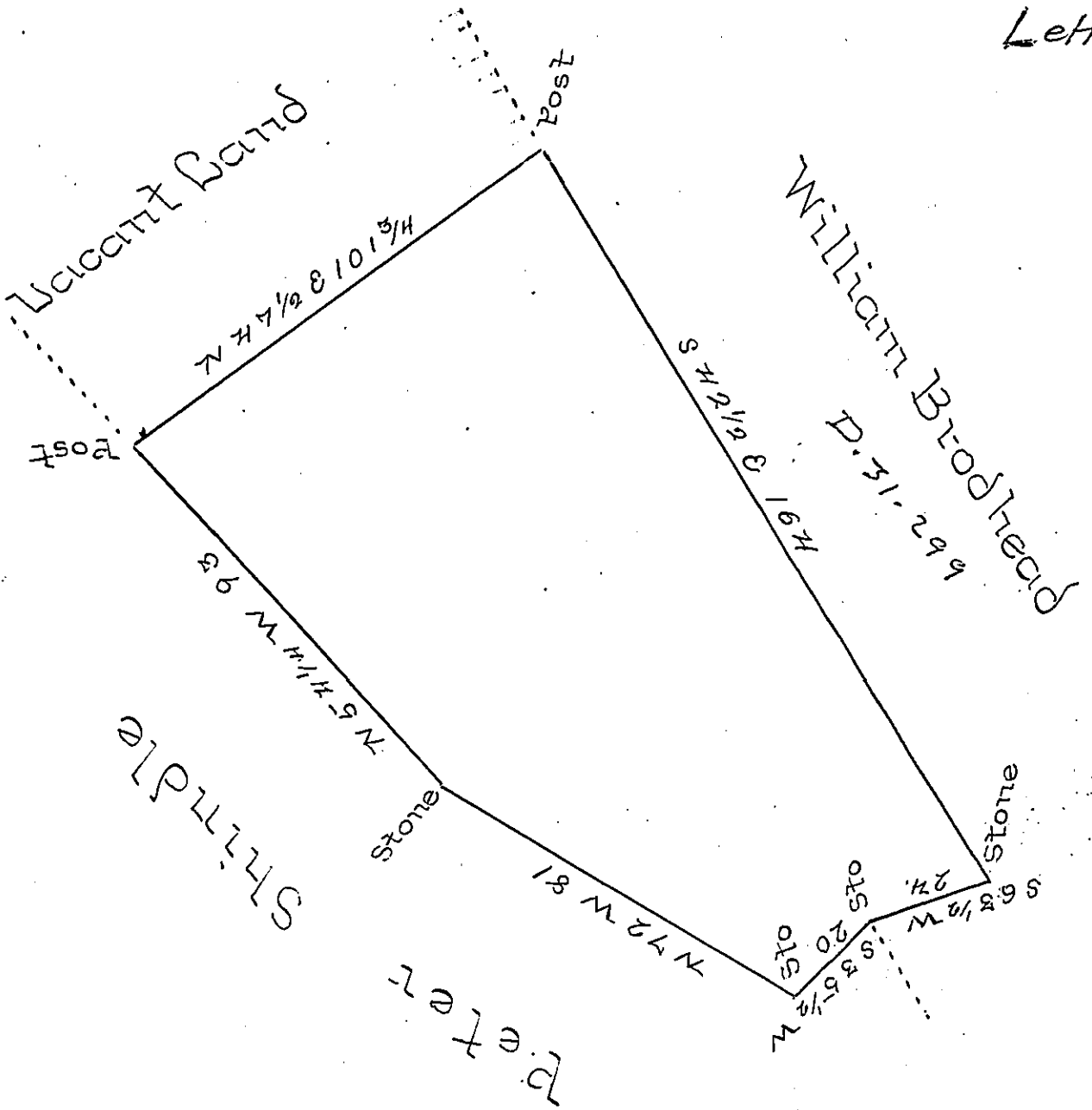


Lehman -
PIKE ✓



By Virtue of a Warrant dated the 25th day of June A.D. 1866. Surveyed the 28th day of June A.D. 1866 to Charles Motel the above described Situate in Lehman Township, Pike County Pa adjoining Land Surveyed to William Brodhead and Peter Shindle - Containing Seventy five Acres and twenty perches and the Allowance of six per Cent for Roads &c.

John Dayton C.S.

To J.M. Campbell Esquire
Surveyor General of
Pennsylvania

IN TESTIMONY that the above is a copy of the original remaining on file in the Department of Internal Affairs of Pennsylvania, made conformably to an Act of Assembly approved the 16th day of February, 1833, I have hereunto set my Hand and caused the Seal of said Department to be affixed at Harrisburg, this fifth day of December 1899

James W. Lewis
Secretary of Internal Affairs.